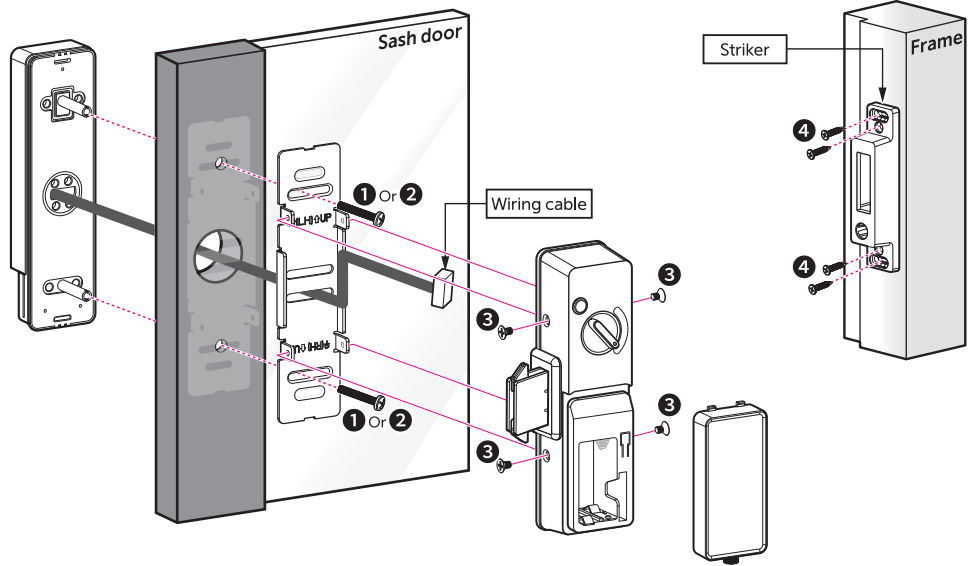
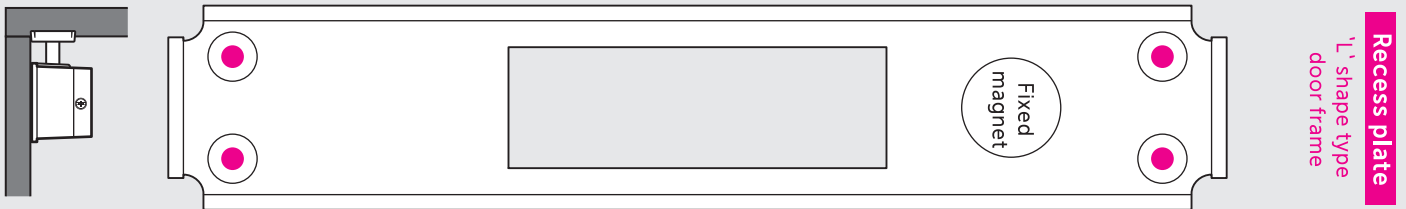


Product installation exploded view (Mira)

- Tip! Installation guide**
- Direct screw fixing
 - Fastening with screws
 - Assembly and Disassembly
- 1** OH M5X20
25-30mm
(Thin door)
 - 2** OH M5X29.3
35-50mm
(Thick door)
 - 3** FH M4X6
 - 4** FH T4X25
(Use Striker)
 - 5** FH T4X19
(Optional)



V0



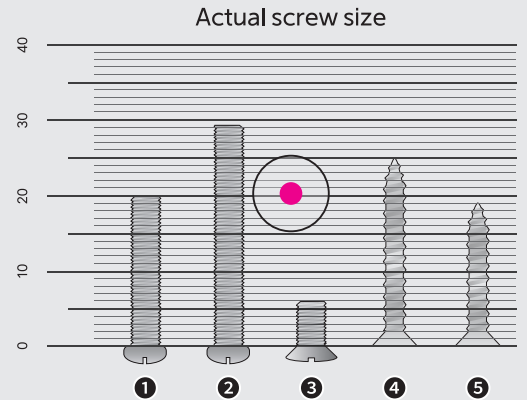
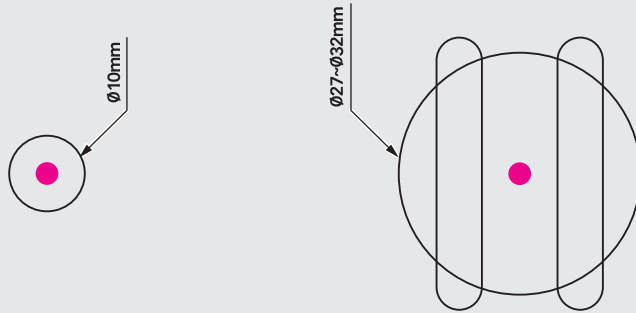
Recess plate
L' shape type door frame

Edge of the door frame

Fold line

Align the position of the sensor label on the product with the position of the magnet sensor during installation.

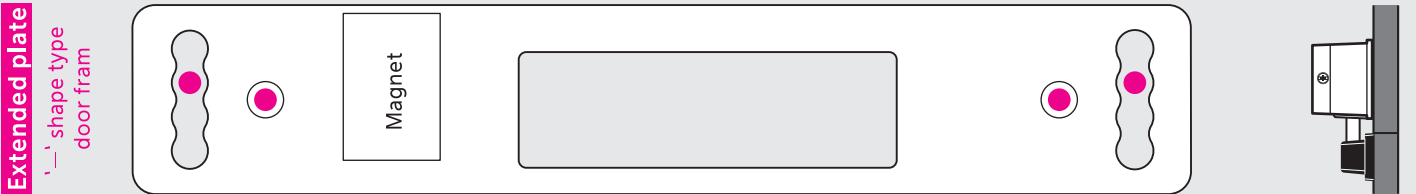
- 1 Drill a hole with a diameter of $\phi 27 - 32$ mm according to the door thickness before installation.
- Over-tightening the screws may cause damage to the door.
- Install the product without excessive force to avoid bending the door or the product.



Align the position of the sensor label on the product with the position of the magnet sensor during installation.

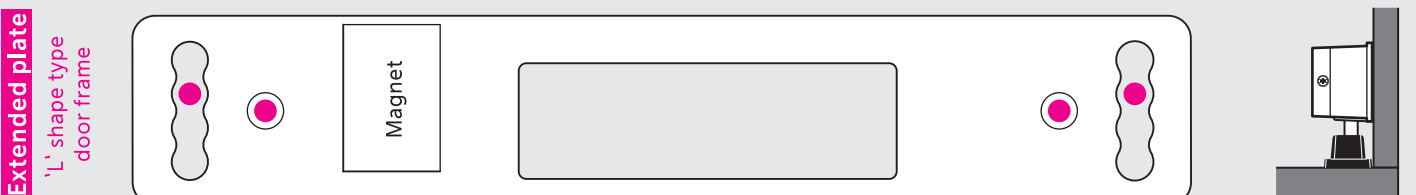
Fold line

Edge of the door frame



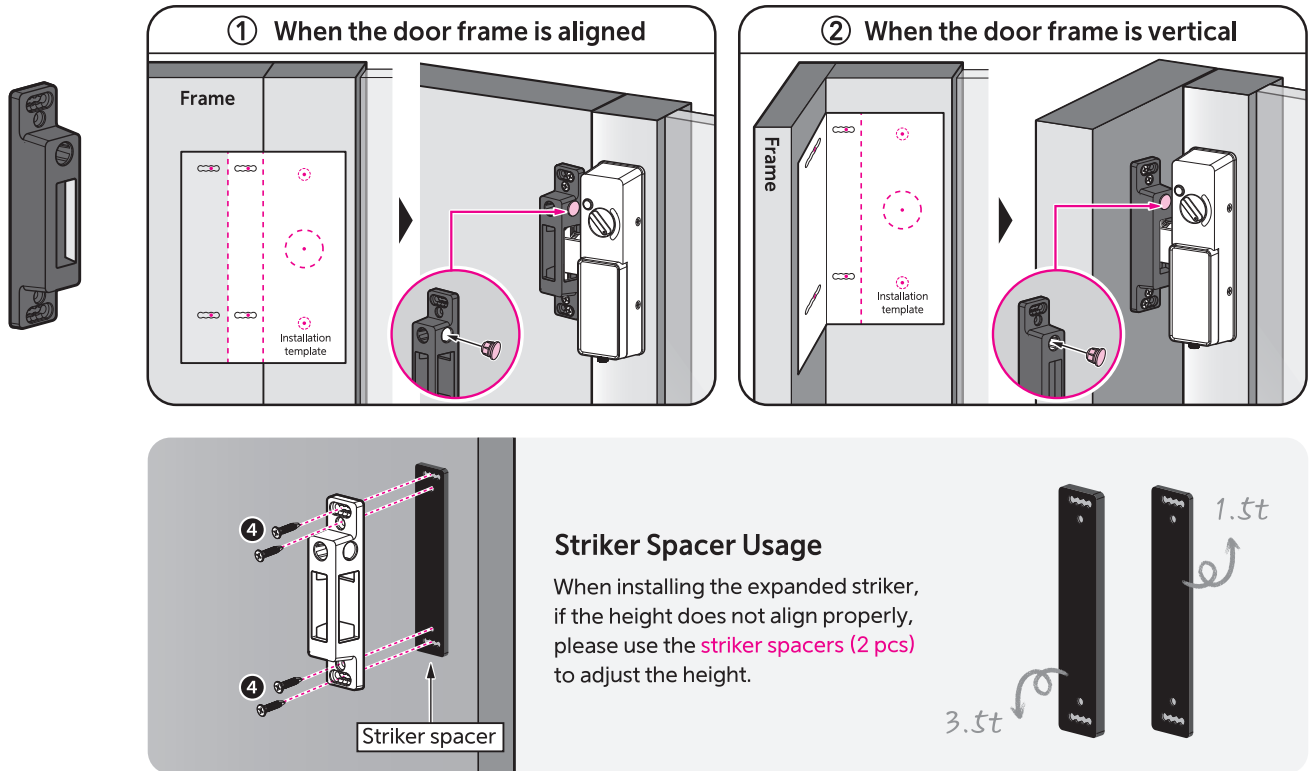
Fold line

Edge of the door frame



How to Install the Expanded Striker

Please check the door frame type first and follow the appropriate installation method below.

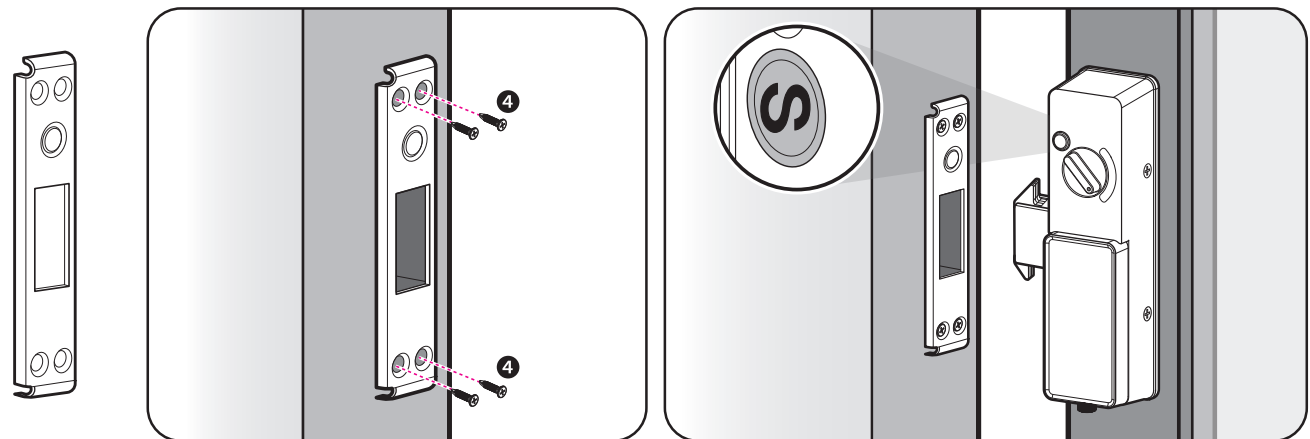


Fold line

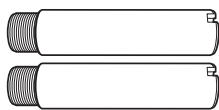
Fold line

How to Install the recess plate

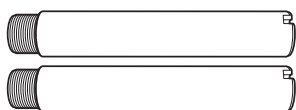
Please refer to the instructions below when installing the recessed plate.



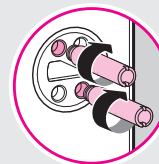
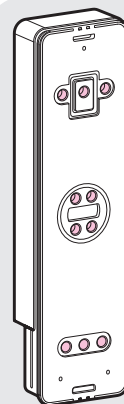
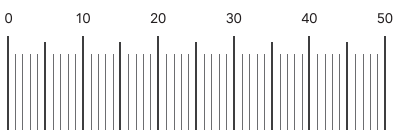
How to Install the Stud bolt



①
M6 X 28mm
Actual scale (1:1)



②
M6 X 38mm
Actual scale (1:1)



Please check the door thickness before installation and use the appropriate stud bolts.

No.	Bolt size	Door thickness
①	M6 X 28	25 ~ 30 mm
②	M6 X 38	35 ~ 50 mm